



Bungalow - Detached

51 COPPICE MEAD, STOTFOLD, HITCHIN, SG5 4JY

PCM

£1,850

FEATURES

- **** DETACHED 3 BED BUNGALOW ****
- ***** Three Double Bedrooms *****
- Open Plan Kitchen/ Diner with floor to ceiling larder cupboards
- Spacious Lounge With French Doors To Garden
- **** Two Bathrooms ****
- Good Sized West Facing Garden
- Parking For upto Four Cars
- Available beginning of June
- Property is currently benefitting from redecoration and kitchen enhancements
- Easy Access To Both A1 & M1 Motorways



3 Bedroom Bungalow - Detached located in Hitchin

**** RARELY AVAILABLE ** ** DETACHED BUNGALOW **** in a quiet cul-de-sac location. Offering a large open plan kitchen diner (undergoing refurb), separate lounge with FRENCH DOORS (replaced bi folds) to garden, three double bedrooms, two bathrooms, secluded west facing garden and parking for upto 4 cars, this lovely home is available from BEGINNING OF JUNE and early viewings are highly recommended. Pets considered. EPC Rating C Council Tax Band D

Call us on

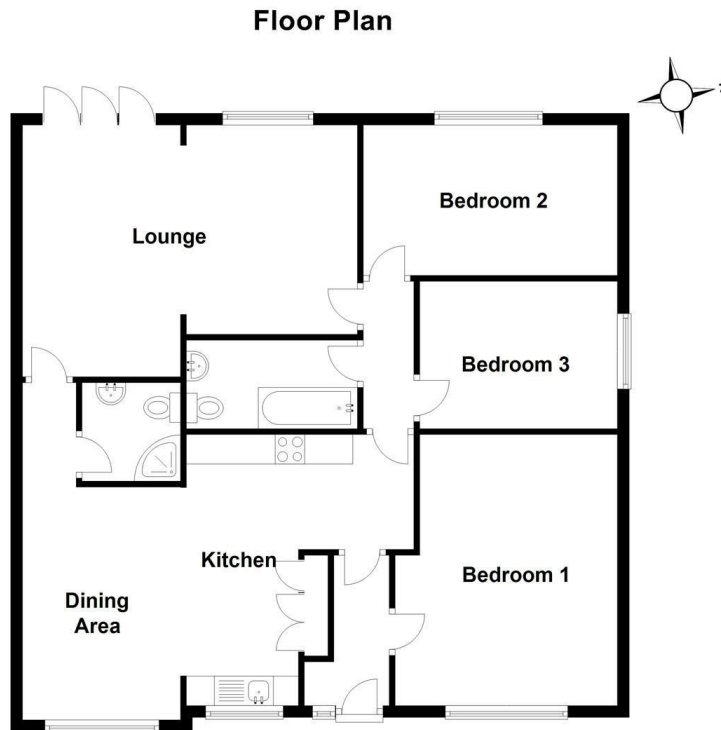
01462 659 730

rentals@firststep.ltd

www.firststep.ltd

Council Tax Band

D



| Energy Efficiency Rating | | Current | Potential |
|--|--|-------------------------|-----------|
| <i>Very energy efficient - lower running costs</i> | | | |
| (92 plus) A | | | |
| (81-91) B | | | 86 |
| (69-80) C | | 74 | |
| (55-68) D | | | |
| (39-54) E | | | |
| (21-38) F | | | |
| (1-20) G | | | |
| <i>Not energy efficient - higher running costs</i> | | | |
| England & Wales | | EU Directive 2002/91/EC | |

Agents Note: Whilst every care has been taken to prepare these particulars, they are for guidance purposes only. All measurements are approximate and are for general guidance purposes only and whilst every care has been taken to ensure their accuracy, they should not be relied upon and potential buyers are advised to recheck the measurements.